

# TX-5266W300FC120-NUFENW-A01

## PRODUCT SPECIFICATION

**Features:**

- ◆Excellent transiting heat from LED chip operating under 10A.
- ◆High luminous output.
- ◆No UV.
- ◆Encapsulated materials are environmentally certified and meet environmental requirements.

**Chip Material:**

- ◆GaN

**Emitting Color:**

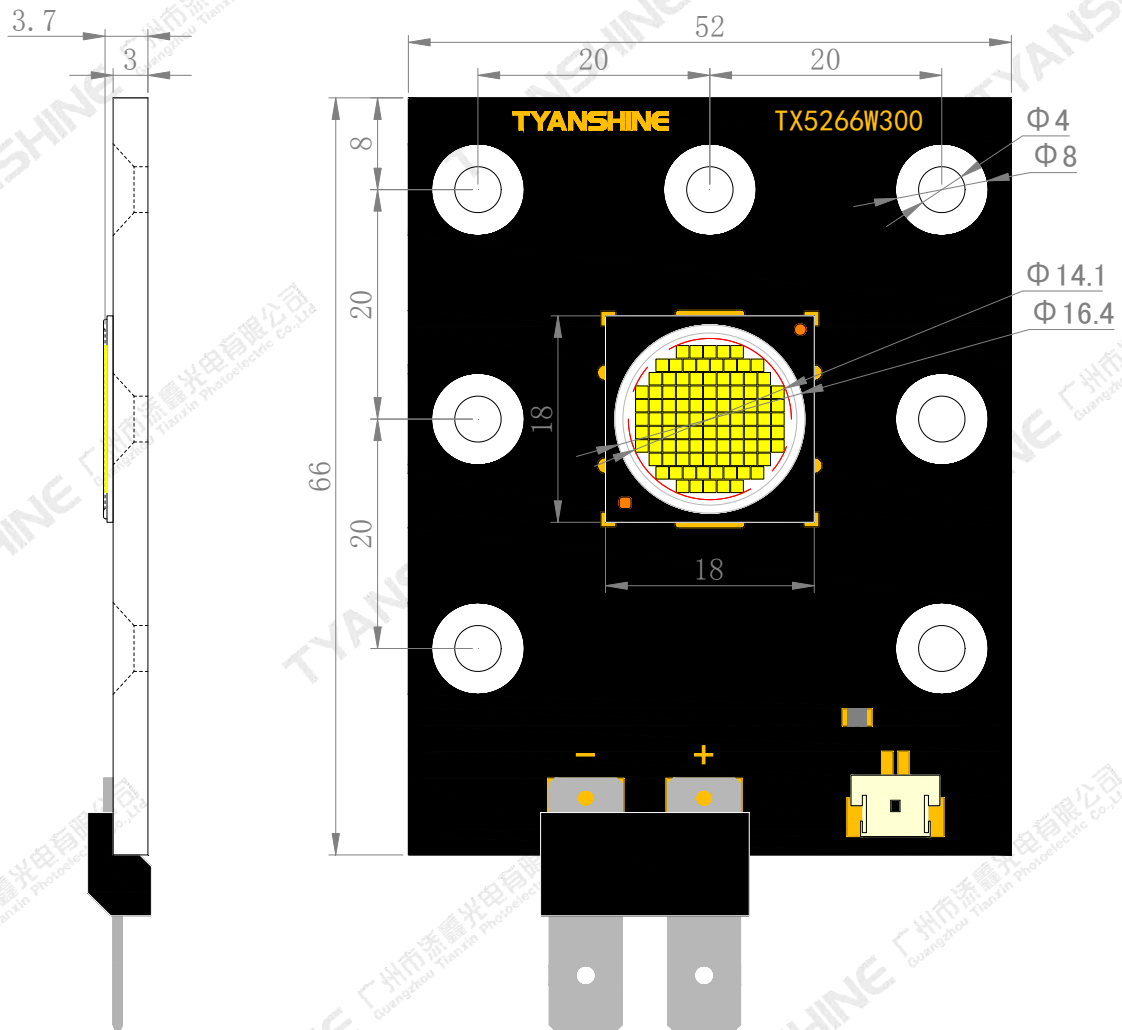
- ◆White

**Applications:**

- ◆Stage lighting
- ◆Landscape Lighting
- ◆Entertainment lighting

Part No.	TX-5266W300FC120-NUFENW-A01	Spec No.	WKF-BE0920	Page	1 of 7
----------	-----------------------------	----------	------------	------	--------

**Package Dimensions:**



**Notes:**

1. All dimensions are in millimeters .
2. Tolerances unless otherwise mentioned are  $\pm 0.1$ mm .

Part No.	TX-5266W300FC120-NUFENW-A01	Spec No.	WKF-BE0920	Page	2 of 7
----------	-----------------------------	----------	------------	------	--------

**Absolute Maximum Ratings (Tc=25°C)**

Parameter	Symbol	Ratings	Unit
Forward Current	IF	10	A
Reverse Voltage	VR	Not designed for reverse operation	V
Power Dissipation	PD	350	W
Junction Temperature	Tj	150	°C
Electrostatic Discharge Threshold (ESD)	ESD	2000	V
Storage Temperature	Tstg	-20~+70	°C
Operation Temperature	Topr	-30~+100	

**Notes:**

1.Specifications are subject to change without notice.

2.The data on this specification is for reference only and the actual data is in accordance with the acknowledgment.

3.Precautions for ESD:

STATIC SHIELD Electricity and surge damages the LED. It is recommended to use a wrist band or anti-electrostatic glove when handling the LED. All devices, equipment and machinery must be properly grounded.

**Electrical Optical Characteristics If=9A**

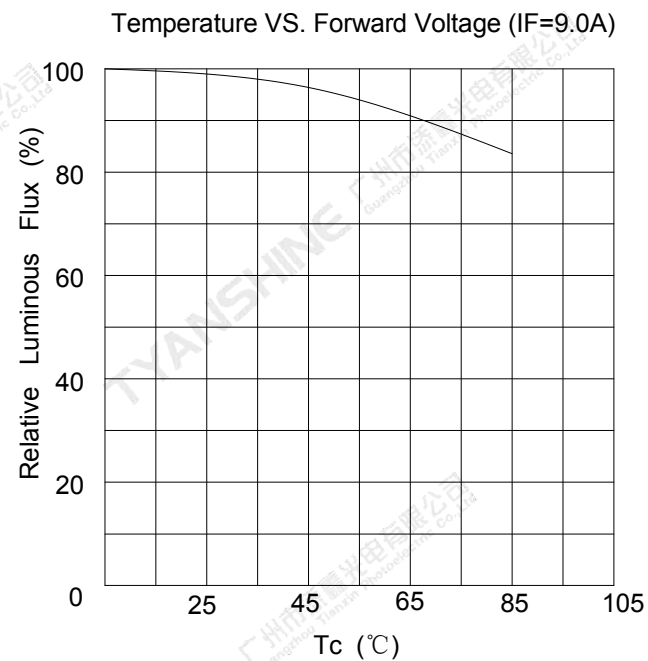
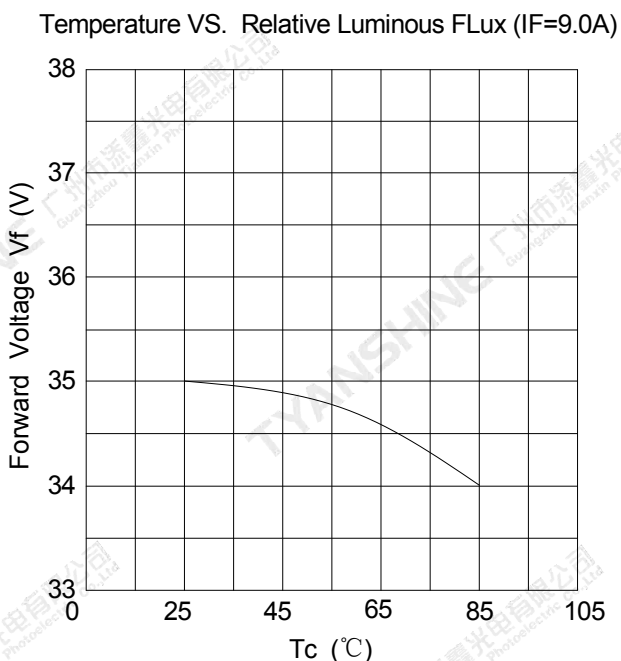
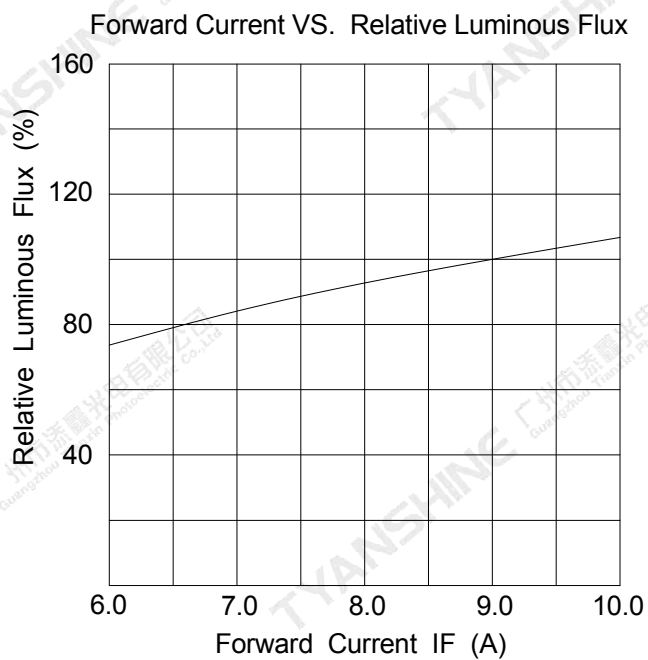
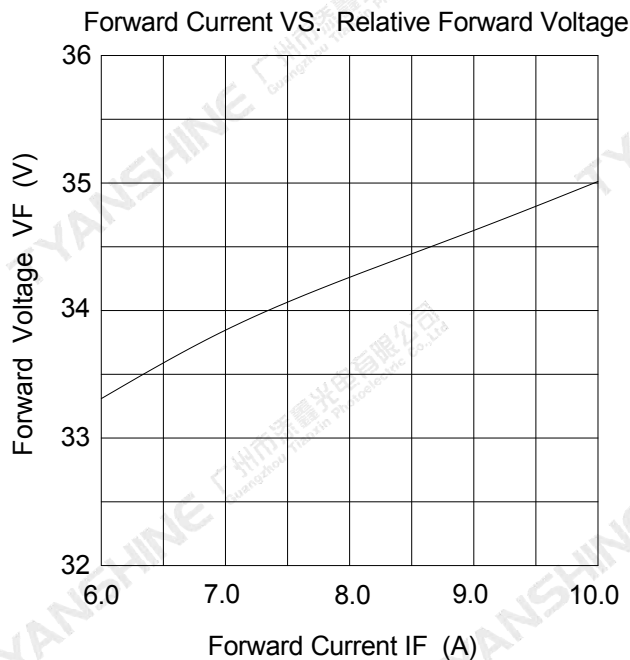
Parameter	Symbol	Condition	Emitting Color	Min.	Typ.	Max.	Units
Luminous Flux	$\Phi_v$	(Tc=25℃)	W	28000	31000	34000	lm
		(Tc=85℃)	W	23000	26000	29000	
Correlated Colour Temperature	CCT	(Tc=25℃)	W	6500	7500	8500	K
		(Tc=85℃)	W	7090	8180	9270	
Forward Voltage	$V_f$	(Tc=25℃)	W	33	35	37	V
		(Tc=85℃)	W	32	34	36	
Viewing Angle at 50% IV	$2\theta_{1/2}$	—	—	—	120	—	Deg
Spectral Line Half-Width	$\Delta\lambda$	(Tc=25℃)	W	20	25	30	nm
		(Tc=85℃)	W	25	30	35	
Reverse Current	$I_R$	—	—	—	—	—	$\mu A$
Color Rendering Index	Ra	—	—	—	—	—	—
Thermal Resistance Junction to Case	$R\theta_{J-C}$	—	—	—	0.05	—	K/W
Temperature Coefficient of Voltage	$V\Delta F/T$	—	—	—	-15	—	mV/℃
Thermistor(NTC)	Rt25	—	—	—	10	—	K $\Omega$

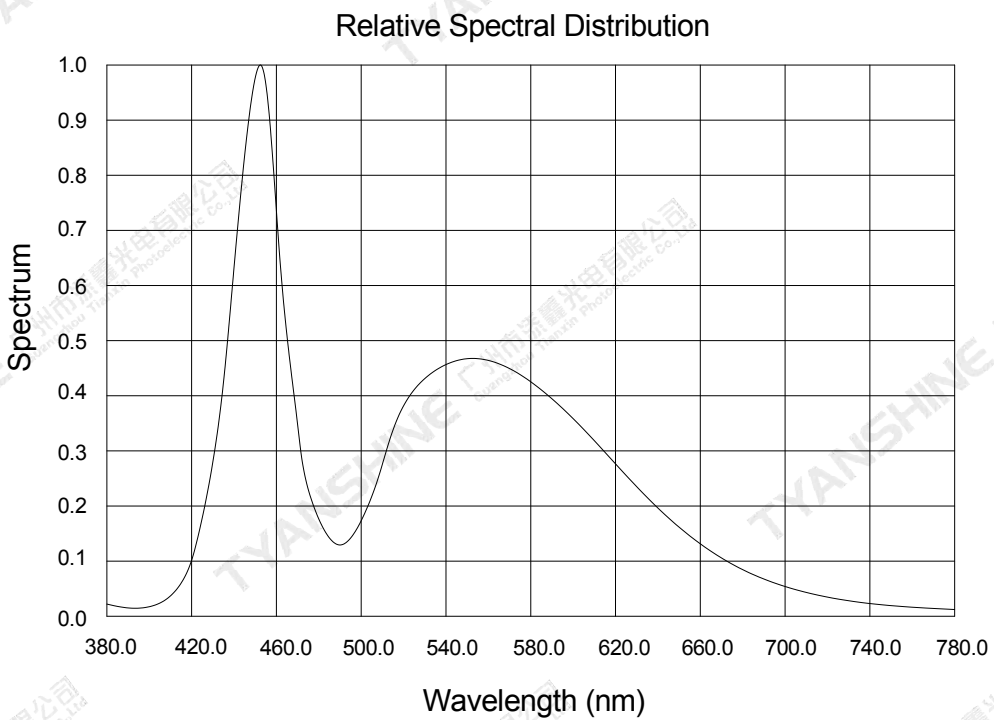
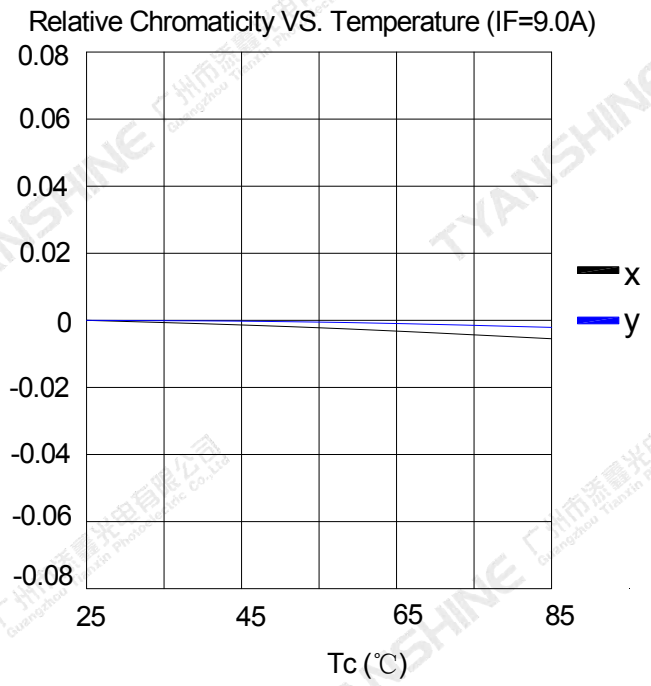
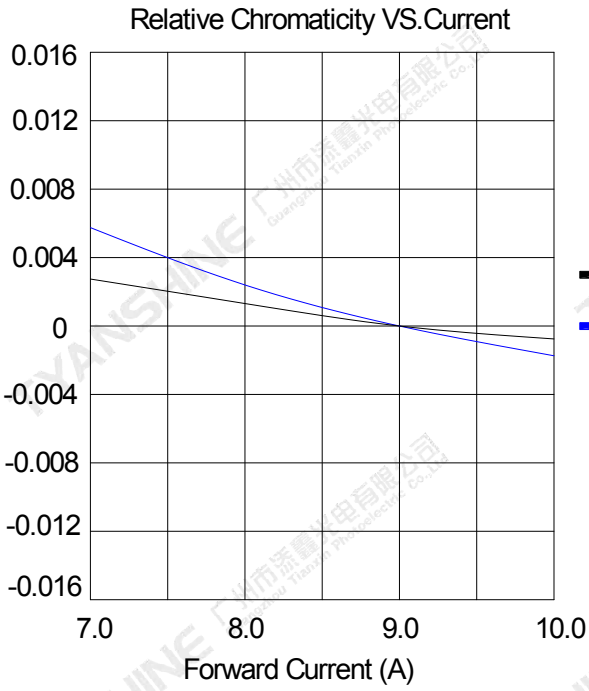
**Notes:**

- 1.Luminous intensity is measured with a light sensor and filter combination that approximates the CIE eye-response curve.
2. $\theta_{1/2}$  is the off-axis angle at which the luminous intensity is half the axial luminous intensity.
- 3.Luminous flux measurement tolerance:±15%.
- 4.Forward voltage measurement tolerance:±0.15V.

## Typical Electrical/Optical Characteristics Curves

(25°C Ambient Temperature Unless Otherwise Noted)



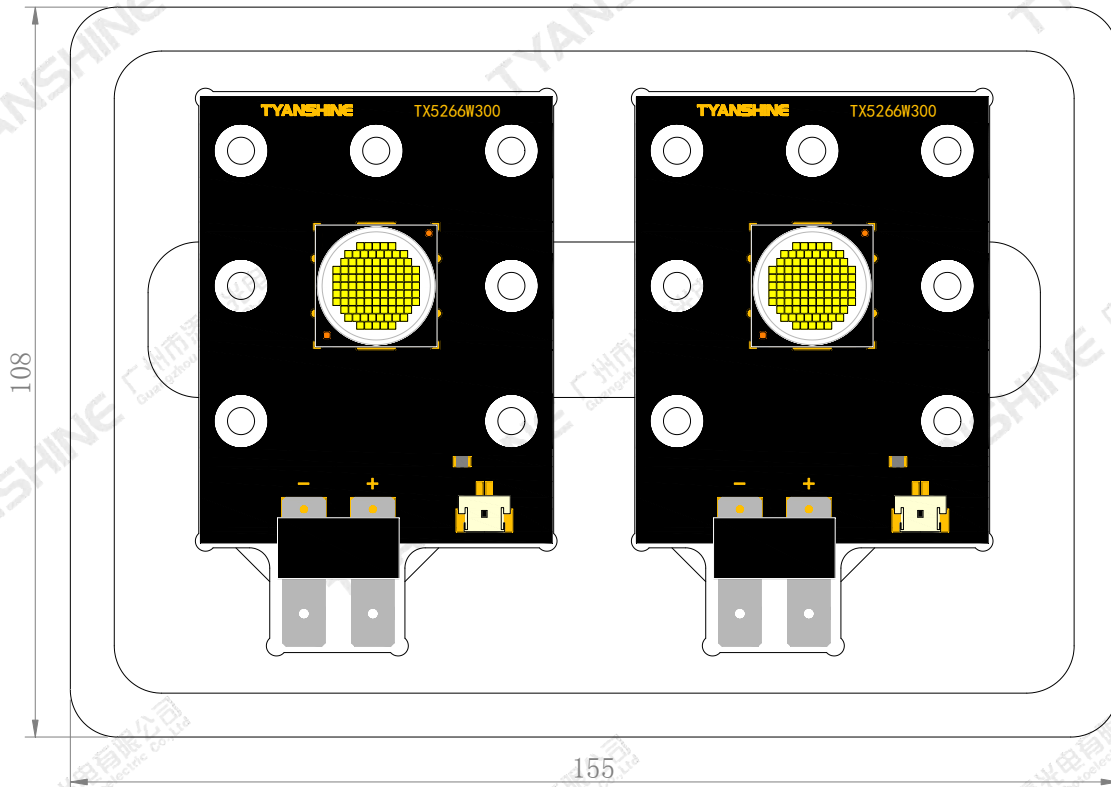


**Notes:**

1.  $2\theta_{1/2}$  is the off axis angle from lamp centerline where the luminous intensity is 1/2 of the peak value.
2. View angle tolerance is  $\pm 5^\circ$ .

**Dimensions For Cannulation And Packaging**

**Quantity:2 PCS**



**Notes:**

1. All dimensions are in millimeters.
2. Tolerances are  $\pm 2.0$  mm unless otherwise noted.
3. The products are packaged together with silica gel, Transport, not to the weight of welding LED light-emitting area, As a result of the weight of LED light-emitting zone in the quality of, Irresponsible of the Company.

Part No.	TX-5266W300FC120-NUFENW-A01	Spec No.	WKF-BE0920	Page	7 of 7
----------	-----------------------------	----------	------------	------	--------